

## Protocol for a **Posterior** restoration



**1.**

Distal cavity at the 46.  
Define shade before preparation.



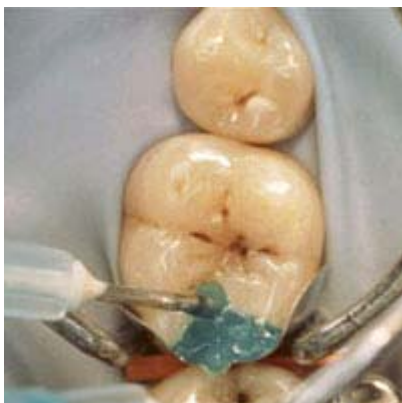
**2.**

Prepare the cavity according to the general directions for composite restoration.



**3.**

Clean and dry the preparation.  
Apply wedges and matrixband.  
The use of rubberdam is recommended to create a clean and dry area.



**4.**

Apply Quadrant Total Etch onto enamel and dentin and leave for 15-30 seconds.  
Rinse thoroughly for at least 5 seconds.  
Remove excess moisture with a gentle stream of air.



**5.**

Apply 3 layers of Quadrant Uni-1-Bond.  
Wait for 15 seconds and light cure for 20 seconds.



**6.**

Apply Quadrant Universal LC in layers of max 2mm in the necessary shade(s).



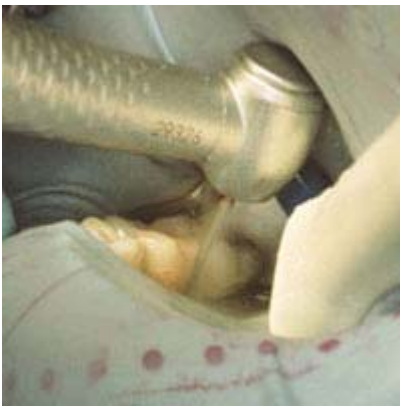
**7.**

Contour the surface of the last layer.



**8.**

Light cure every layer for 20 seconds.



**9.**

Finish with a fine diamond, and polish with flexible discs and silicon polishers.



**10.**

Result after restoration: aesthetic and durable.